

# Swing Outdoor Sign

## SWING-SIGN

The Swing Sign is a sleek and durable portable sign for both indoor and outdoor use. The Swing Sign offers a durable black steel tube frame with double ring mounting clips that keep graphics securely in place, while providing the ability to change graphics easily. The fillable water base ensures the sign stays in place securely. The attached wheels make for easy transport and mobility.



## features and benefits:

- Economy black steel tube frame
- Graphics available double or single sided
- Double-ring mounting system holds signage securely in place
- Fillable water base
- One year limited hardware warranty against manufacturer defects
- Attached wheels on base for easy transport
- Quick and easy set up
- Wind rating: 15mph max

## dimensions:

Hardware	Graphic
<p>Assembled unit: 24.5" w x 39" h x 15.75" d 623mm(w) x 991mm(h) x 401mm(d)</p> <p>Approximate weight: 10 lbs / 4 kg</p>	<p>Refer to related graphic template for more information.</p> <p>Six month graphic warranty</p> <p>Visit: <a href="https://www.theexhibitorshandbook.com/download-graphic-templates">https://www.theexhibitorshandbook.com/download-graphic-templates</a></p>

Shipping	additional information:
----------	-------------------------

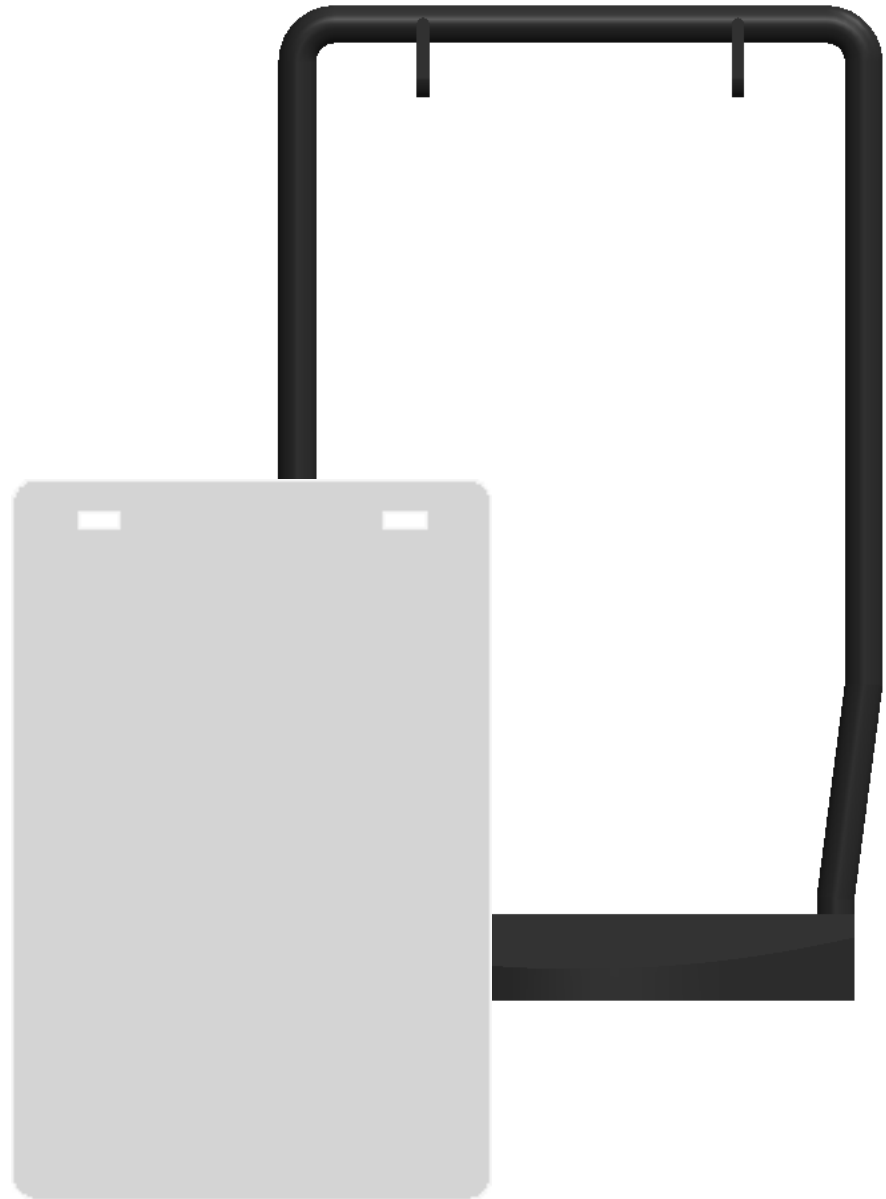
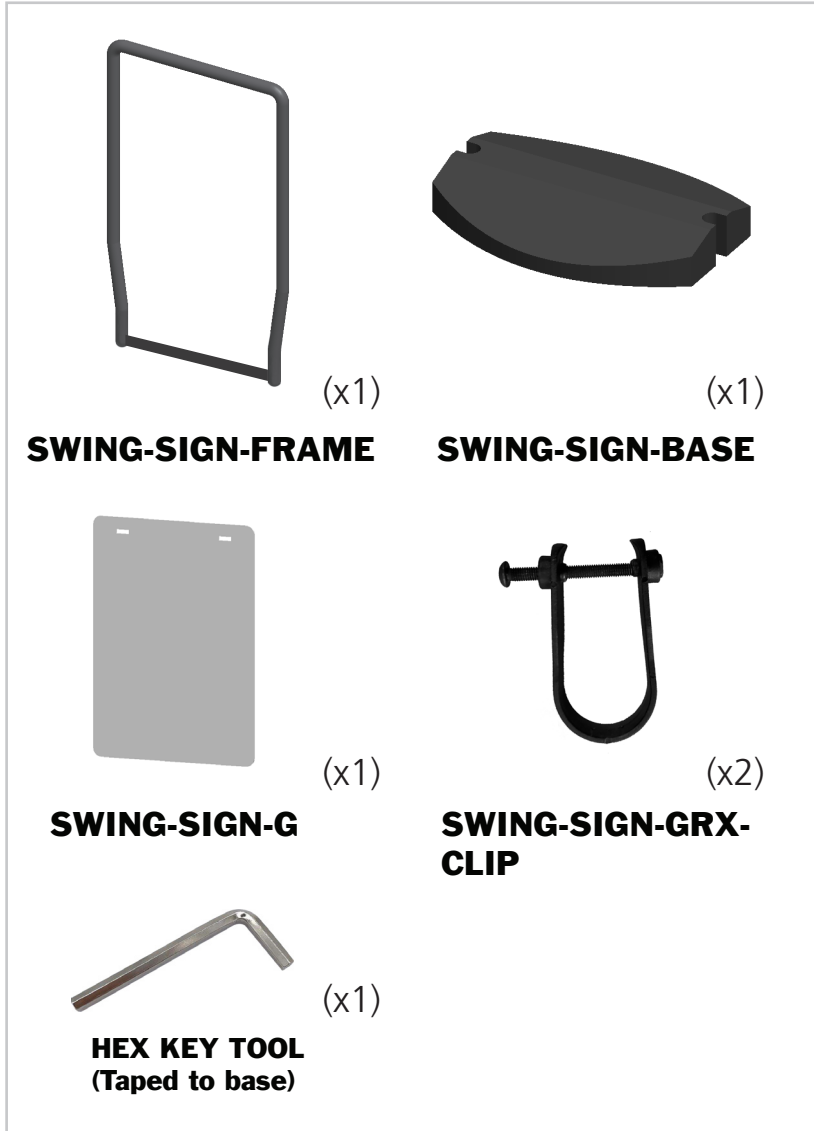
<p>Packing case(s): 1 Box</p> <p>Shipping dimensions: 40"l x 26"h x 5"d 1016mm(l) x 635mm(h) x 127mm(d)</p> <p>Approximate total shipping weight: 13 lbs / 6 kg</p>	<p>Graphic material: 6mm UV printed PVC</p> <p>*Base is not intended to be used in severe weather conditions while filled.</p>
---	--

We are continually improving and modifying our product range and reserve the right to vary the specifications without prior notice. All dimensions and weights quoted are approximate and we accept no responsibility for variance. E&OE. See Graphic Templates for graphic bleed specifications.



This product may include the following materials for recycle:  
aluminum, select wood, fabric, cardboard, paper, steel, and plastics.

# Included In Your Kit

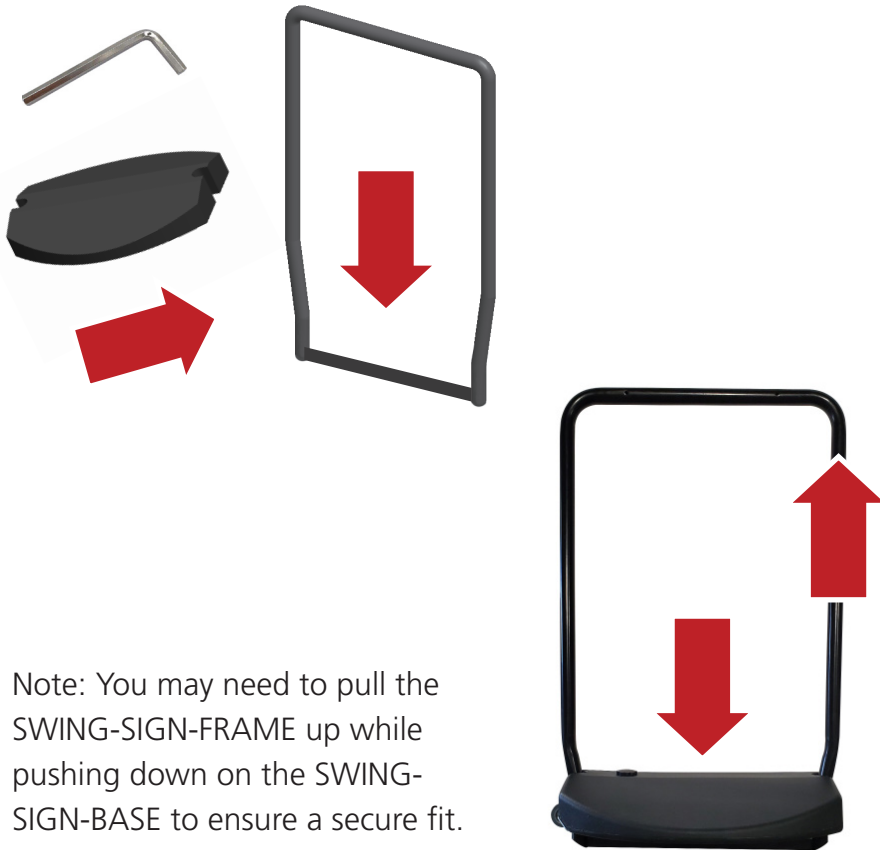


\*Not to scale

# Hardware Assembly

Remove the included HEX KEY TOOL from the SWING-SIGN-BASE (taped to the bottom of the base).

Assemble the hardware by pivoting the the SWING-SIGN-BASE between the vertical tubes of the SWING-SIGN-FRAME and sliding down until it locks in place.



# Hook Attachment

Place the SWING-SIGN-GRX-CLIPs so the hole lines up with those of the SWING-SIGN-FRAME horizontal tube.

Push the SWING-SIGN-GRX-CLIP screws through the front side of the SWING-SIGN-FRAME. The head of the screws should face the same direction. Do not tighten the screws.



# Graphic Attachment

Push both SWING-SIGN-GRX-CLIP flaps through the SWING-SIGN-G graphic holes.

Once the graphic is in place, push the other side of the SWING-SIGN-GRX-CLIP onto the screws and tighten with the HEX KEY TOOL.



Note: For single-sided graphics, the front of the graphic should face the same side as the SWING-SIGN-GRX-CLIP screw heads.

# Fill Base

Fill the SWING-SIGN-BASE with water and tighten the cap.

Your display is now ready to use!

